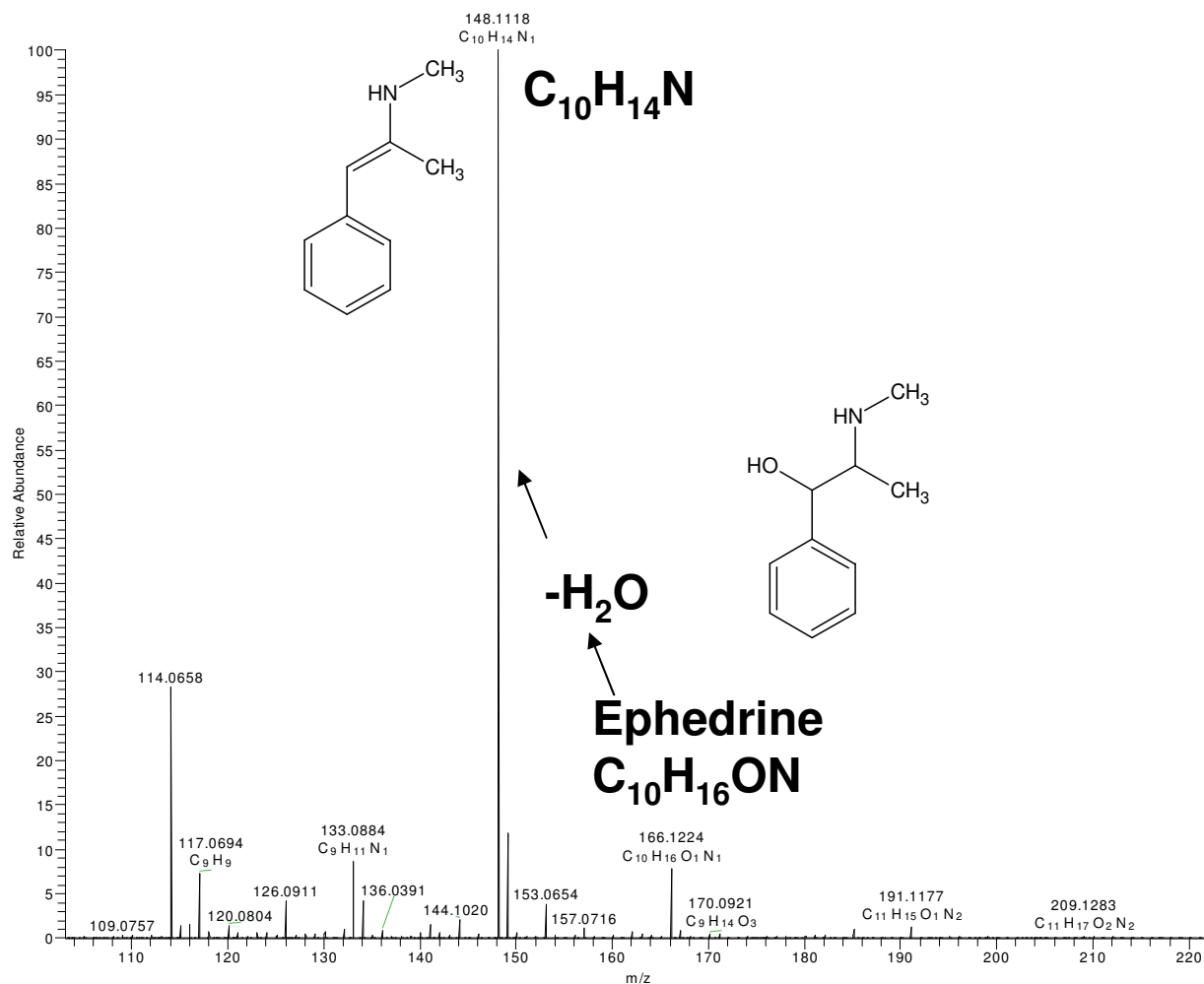


## Analysis of Drugs in Urine

Analysis of compounds in Urine has always been labor intensive, requiring the proper extraction procedures and solvents. ASAP can reduce the time required to perform this type analysis by completely eliminating the preparation step. In this example, a Suedefed™ was ingested 9 hours before a urine sample was taken for analysis. The sample was prepared by dipping a melting point tube in the raw urine, allowing it to dry and inserting it directly into a 200 °C nitrogen gas stream in a high resolution mass spectrometer using the ASAP probe. As seen below the Ephedrine and the M-H<sub>2</sub>O ion can easily be detected.



Direct analysis of urine by ASAP probe